

# 7.12 T2010 & T2030 Control Head PCB

## T2010 & T2030 Control Head Parts List (IPN 220-01319-01)

Ref	Var	IPN	Description	Ref	Var	IPN	Description
BUSY		008-00010-25	(S) LED 2MM GREEN TOWER 3.8MM BASE ROHM	R587		036-12100-00	RES M/F 0805 CHIP 10E 5%
				R588		036-14220-00	RES M/F 0805 CHIP 2K2 5%
C510		015-06100-08	CAP CER 1206 CHIP 100N 10% X7R 50V	R589		036-14470-00	RES M/F 0805 CHIP 4K7 5%
C511		015-25150-08	CAP CER 0805 CHIP 15N 10% X7R 50V	R590		036-14220-00	RES M/F 0805 CHIP 2K2 5%
C512		015-24100-08	CAP CER 0805 CHIP 1N 10% X7R 50V	R591		036-13150-00	RES M/F 0805 CHIP 150E 5%
C513		015-24100-08	CAP CER 0805 CHIP 1N 10% X7R 50V	R594		036-12100-00	RES M/F 0805 CHIP 10E 5%
C514		015-25100-08	CAP CER 0805 CHIP 10N 10% X7R 50V	S10		240-04021-61	SKT TELEPHONE JACK 6-WAY SIDE ENTY 555163
C515		015-24100-08	CAP CER 0805 CHIP 1N 10% X7R 50V				
C516		015-24470-08	CAP CER 0805 CHIP 4N7 10% X7R 50V	TX		008-00010-21	(S) LED 2MM RED TOWER 3.8MM BASE ROHM S-
C517		015-25100-08	CAP CER 0805 CHIP 10N 10% X7R 50V				
C518		015-25220-08	CAP CER 0805 CHIP 22N 10% X7R 50V				
C531		015-23150-01	CAP CER 0805 CHIP 150P 5% NPO 50V				
C570		015-06100-08	CAP CER 1206 CHIP 100N 10% X7R 50V				
DCALL		008-00010-25	(S) LED 2MM GREEN TOWER 3.8MM BASE ROHM				
DAUX		008-00010-25	(S) LED 2MM GREEN TOWER 3.8MM BASE ROHM				
DSCAN		008-00010-25	(S) LED 2MM GREEN TOWER 3.8MM BASE ROHM				
DMON		008-00010-25	(S) LED 2MM GREEN TOWER 3.8MM BASE ROHM				
D-C1		008-00010-25	(S) LED 2MM GREEN TOWER 3.8MM BASE ROHM				
D-C2		008-00010-25	(S) LED 2MM GREEN TOWER 3.8MM BASE ROHM				
D-C3		008-00010-25	(S) LED 2MM GREEN TOWER 3.8MM BASE ROHM				
D-C4		008-00010-25	(S) LED 2MM GREEN TOWER 3.8MM BASE ROHM				
D502		001-10000-99	(S) DIODE SMD BAV99 DUAL SWTCH SNGLE INL				
D520		008-00010-15	(S) LED 3MM GREEN HLMP1585 DIFSD 2V3 6.0				
D521		008-00010-15	(S) LED 3MM GREEN HLMP1585 DIFSD 2V3 6.0				
D522		008-00010-15	(S) LED 3MM GREEN HLMP1585 DIFSD 2V3 6.0				
IC507		002-10140-21	(S) IC MC14021BDR2 8BIT SHIFT REGISTR.SO				
IC508		002-74905-95	(S) IC SMD 74HC595 SHIFT REGISTER				
IC514		002-74905-95	(S) IC SMD 74HC595 SHIFT REGISTER				
IC515		002-74900-04	(S) IC SMD 74HC04D HEX INVERTER BUFFD				
P8		240-00026-24	CONN PADLE BRD 16 WAY MICRO MATCH 1-2155				
P11		240-00020-87	HEADER 2X5 WAY RGT ANGLE PCB MTG MOLEX				
PT501		040-05100-20	SWITCH ROT 10K LOG POT 3A 16VDC SPST PC				
Q506		000-10008-48	(S) XSTR SMD BCW60/BC848B215 NPN SOT23 A				
Q550		000-10008-48	(S) XSTR SMD BCW60/BC848B215 NPN SOT23 A				
R517		036-10000-00	RES M/F 0805 CHIP ZERO OHM				
R544		036-15470-00	RES M/F 0805 CHIP 47K 5%				
R545		036-15470-00	RES M/F 0805 CHIP 47K 5%				
R548		036-13560-00	RES M/F 0805 CHIP 560E 5%				
R549		036-13560-00	RES M/F 0805 CHIP 560E 5%				
R550		036-13560-00	RES M/F 0805 CHIP 560E 5%				
R551		036-13560-00	RES M/F 0805 CHIP 560E 5%				
R552		036-13560-00	RES M/F 0805 CHIP 560E 5%				
R553		036-13560-00	RES M/F 0805 CHIP 560E 5%				
R554		036-13560-00	RES M/F 0805 CHIP 560E 5%				
R555		036-13560-00	RES M/F 0805 CHIP 560E 5%				
R556		036-15470-00	RES M/F 0805 CHIP 47K 5%				
R557		036-15470-00	RES M/F 0805 CHIP 47K 5%				
R558		036-15470-00	RES M/F 0805 CHIP 47K 5%				
R559		036-15470-00	RES M/F 0805 CHIP 47K 5%				
R560		036-15470-00	RES M/F 0805 CHIP 47K 5%				
R561		036-15470-00	RES M/F 0805 CHIP 47K 5%				
R562		036-15470-00	RES M/F 0805 CHIP 47K 5%				
R563		036-15470-00	RES M/F 0805 CHIP 47K 5%				
R564		036-13470-00	RES M/F 0805 CHIP 470E 5%				
R565		036-13470-00	RES M/F 0805 CHIP 470E 5%				
R566		036-13470-00	RES M/F 0805 CHIP 470E 5%				
R567		036-14100-00	RES M/F 0805 CHIP 1K 5%				
R573		036-14100-00	RES M/F 0805 CHIP 1K 5%				
R574		036-13560-00	RES M/F 0805 CHIP 560E 5%				
R575		036-13560-00	RES M/F 0805 CHIP 560E 5%				
R576		036-13560-00	RES M/F 0805 CHIP 560E 5%				
R577		036-13560-00	RES M/F 0805 CHIP 560E 5%				

## T2010 & T2030 Control Head Mechanical & Miscellaneous Parts

IPN	Description	IPN	Description
-----	-------------	-----	-------------

220-01319-01	PCB T2010/30 DISPLAY BRD		
240-00020-54	PLUG 16 WAY 2X8 FLAT CABLE TERMN MICROMATCH		
240-04020-72	SKT HOUSING 2 WAY CORD MTG ULTREX		
240-04020-99	SKT RECEPTACLE SML WIRE CRIMP FOR ULTREX HOUS		
250-00010-19	SPKR A3M2520 C/W RUBBER SEALING RING		
301-00001-05	ADAPTOR FRT PNL T2000 SII		
304-07035-00	LIGHT SPREADER A2M2531 BUTTONS T2000 FM1/TR1		
304-07037-00	LIGHT SPREADER A4M2533 KNOB T2000 FM1/TR1		
311-01042-01	KNOB A3M2530 T2000 S11		
349-00010-22	SCREW NO 4X3/8 PAN POZI PLASTITE		
349-00010-24	SCREW #4X5/8 PLASTITE PAN POZI		
357-00010-03	FIX PUSH ON SFO 2938		
365-00100-20	LABEL WHITE S/A 28X11MM QUIKSTIK RW718/4		
429-20000-05	T2000 SERIES II INSTALLATION GUIDE		

### T2010 VARIANT PARTS

201-00030-10	WIRE #1 T/C WIRE 7/0.2MM PVC BLACK		
205-00010-12	CABLE FLAT RBBN 16 CORE 16/7/0.1 GREY		
311-03074-01	KEYPAD T2010 SII INTERNATIONAL		
316-06428-01	PNL FRT SCR N T2010 SII		
349-00020-30	SCREW TAPTITE M3X6MM PAN POZI BZ		
400-00020-07	SLEEVING 2MM SIL RUBBER		
459-20100-02	T2010/T2015 SERIES II USERS GUIDE		

### T2010 EMC VARIANT PARTS

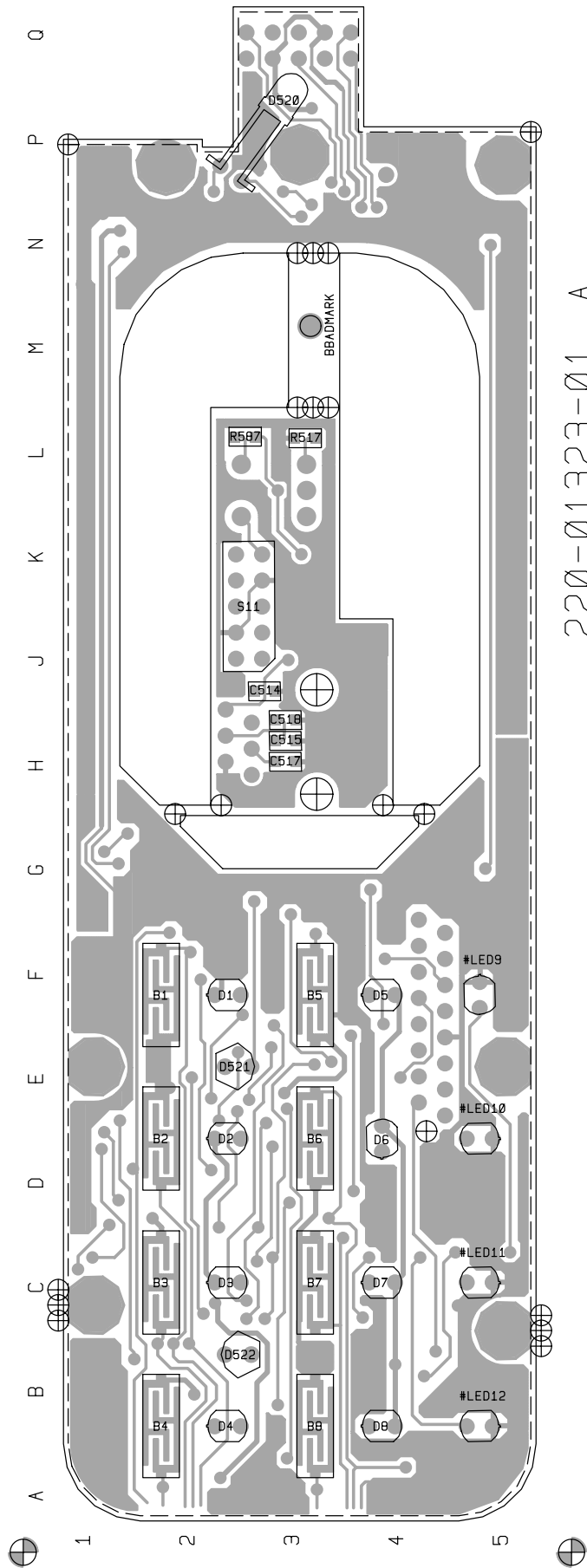
205-00010-16	CABLE FLAT RBBN 25 CORE 28 AWG GREY		
240-00010-91	CONN MALE ON WIRE 18WAY MICROMATCH		
311-03074-01	KEYPAD T2010 SII INTERNATIONAL		
316-06428-01	PNL FRT SCR N T2010 SII		
369-00020-30	TAPE VINYLFOAM 2 SIDE S/A 24*1.5MM INSEAL 516		
459-20100-02	T2010/T2015 SERIES II USERS GUIDE		
X2EF03	EMC FILTER PCB ASSEMBLY T201X T2030		

### T2030 VARIANT PARTS

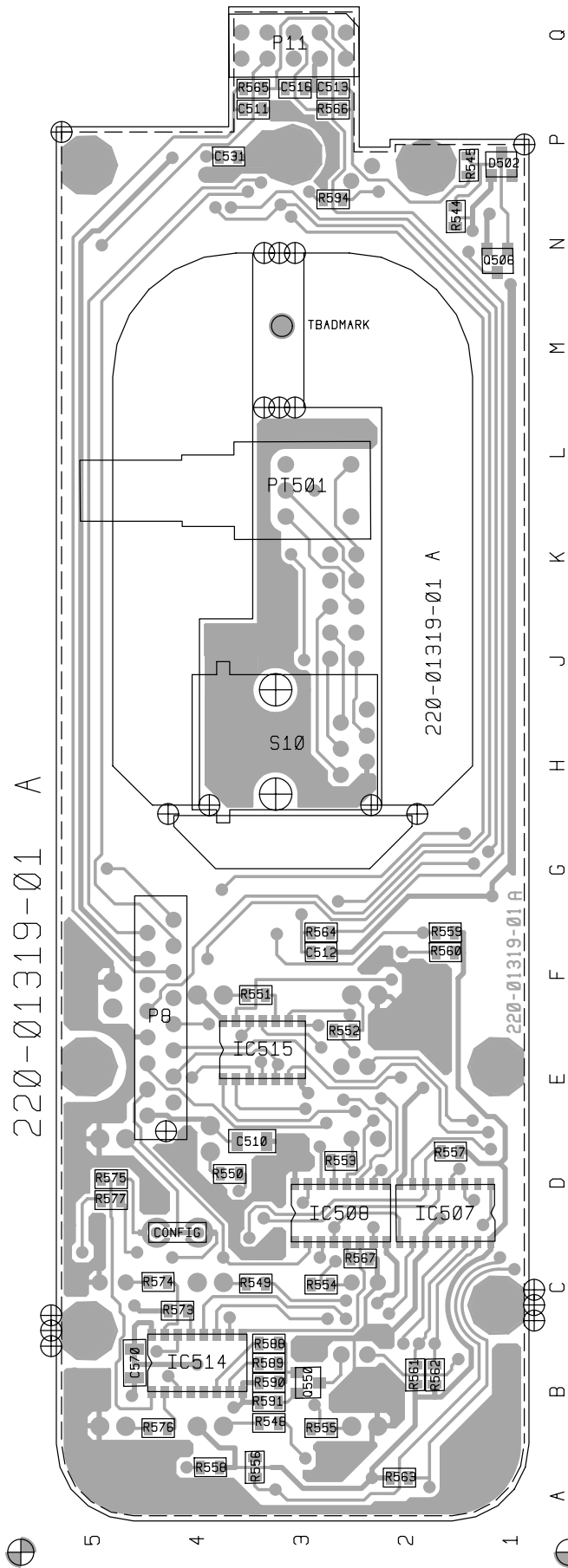
201-00030-10	WIRE #1 T/C WIRE 7/0.2MM PVC BLACK		
205-00010-12	CABLE FLAT RBBN 16 CORE 16/7/0.1 GREY		
240-00026-24	CONN PADLE BRD 16 WAY MICRO MATCH 1-215570-6		
311-03077-01	KEYPAD T2030 SII INTERNATIONAL		
316-06429-01	PNL FRT SCR N T2030 SII		
349-00020-30	SCREW TAPTITE M3X6MM PAN POZI BZ		
400-00020-07	SLEEVING 2MM SIL RUBBER		
459-20300-02	T2030/T2035 SERIES II USERS GUIDE		

### T2030 EMC VARIANT PARTS

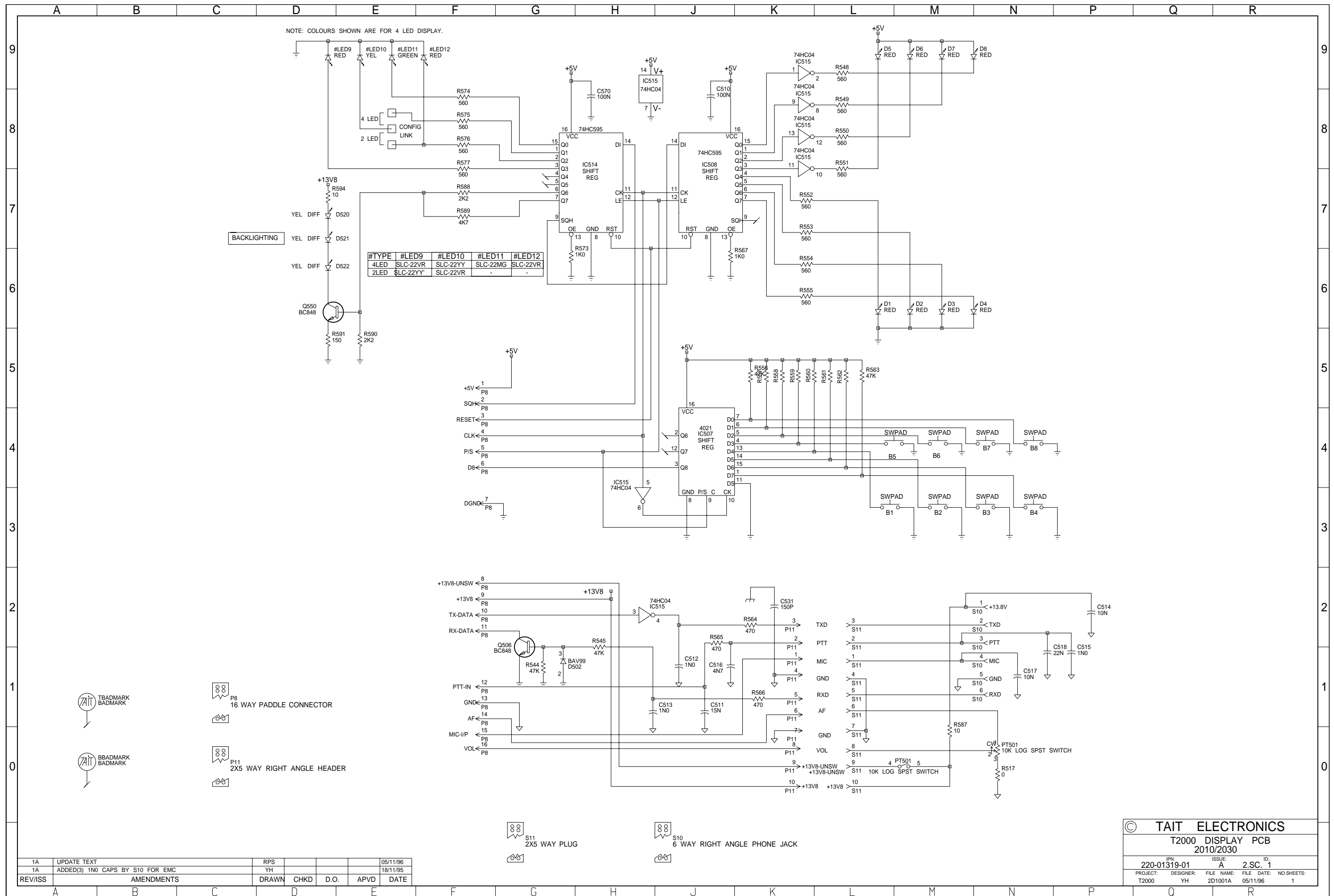
205-00010-16	CABLE FLAT RBBN 25 CORE 28 AWG GREY		
240-00010-91	CONN MALE ON WIRE 18WAY MICROMATCH		
240-00026-24	CONN PADLE BRD 16 WAY MICRO MATCH 1-215570-6		
311-03077-01	KEYPAD T2030 SII INTERNATIONAL		
316-06429-01	PNL FRT SCR N T2030 SII		
356-00010-01	TAG SOLDER 3MM SHORT M6132/3.2		
369-00020-30	TAPE VINYLFOAM 2 SIDE S/A 24*1.5MM INSEAL 516		
400-00020-07	SLEEVING 2MM SIL RUBBER		
459-20300-02	T2030/T2035 SERIES II USERS GUIDE		
X2EF03	EMC FILTER PCB ASSEMBLY T201X T2030		



T2010 & T2030 Control Head PCB (IPN 220-01319-01) - Bottom Side



T2010 & T2030 Control Head PCB (IPN 220-01319-01) - Top Side



1A	UPDATE TEXT	RPS			05/11/96
1A	ADDED(3) 1N0 CAPS BY S10 FOR EMC	YH			18/11/95
REV/ISS	AMENDMENTS	DRAWN	CHKD	D.O.	APVD DATE

© TAIT ELECTRONICS			
T2000 DISPLAY PCB 2010/2030			
IPN:	ISSUE:	FILE NAME:	NO. SHEETS:
220-01319-01	A	2.SC. 1	1
PROJECT:	DESIGNER:	FILE DATE:	
T2000	YH	2D1001A	05/11/96

